

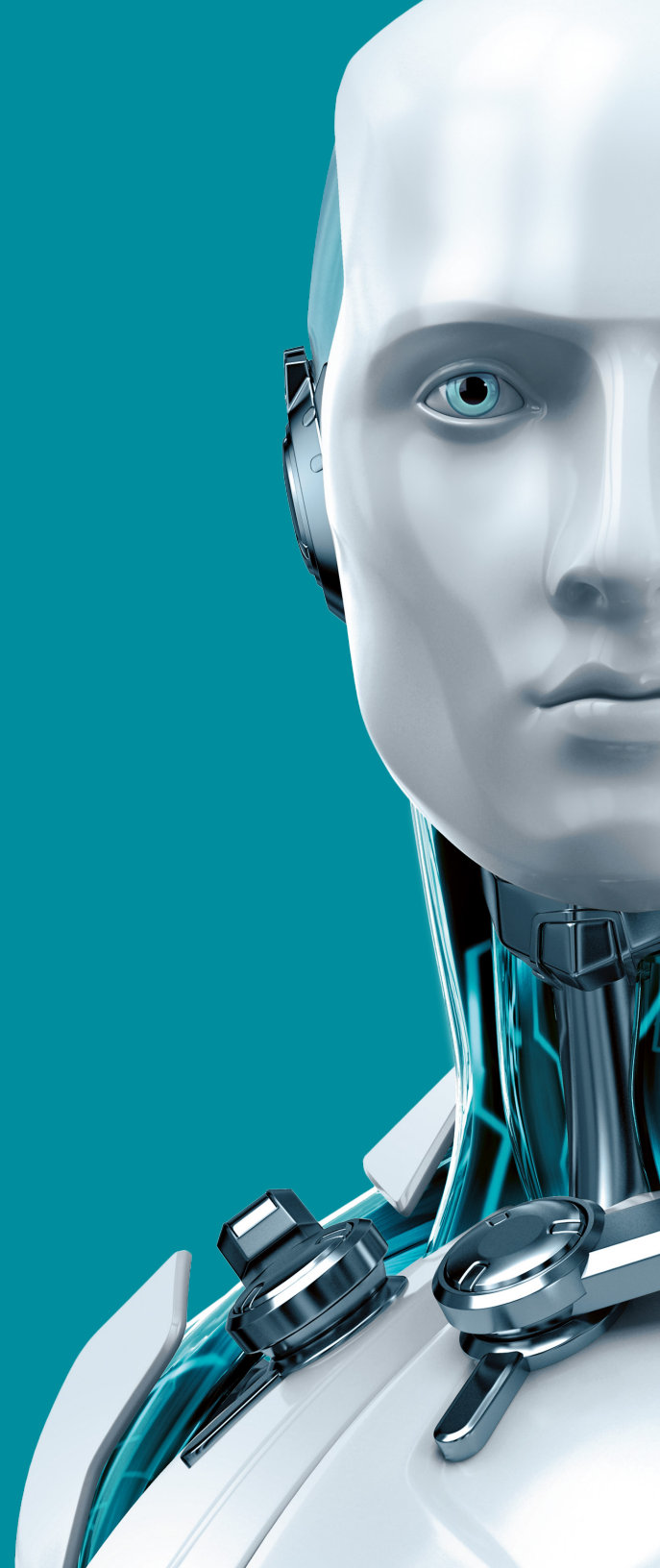


# MAIL SECURITY

FOR LINUX/FREE BSD



ENJOY SAFER TECHNOLOGY®





# MAIL SECURITY

FOR LINUX/FREE BSD

## Operating Systems:

Linux: Kernel version 2.6.x  
glibc 2.3.6 or higher

FreeBSD: Version 6.x or 7.x & 8.x

Sun Solaris: Version 10

NetBSD: Version 4

## Processor Architecture:

Intel®/AMD® x86/x64



FREE LOCAL  
TECHNICAL  
SUPPORT

As an ESET customer, Do More with  
the help of our technical support team.

© 1999-2018 ESET, LLC d/b/a ESET North America.  
All rights reserved.

ESET, the ESET Logo, ESET android figure, ESET SMART SECURITY, ESET CYBER SECURITY, ESET.COM, ESET.EU, NOD32, SysInspector, ThreatSense, ThreatSense.Net, LiveGrid and LiveGrid logo are trademarks, service marks and/or registered trademarks of ESET, LLC, d/b/a ESET North America and/or ESET, spol. s r. o., in the United States and certain other jurisdictions. All other trademarks and service marks that appear in these pages are the property of their respective owners and are used solely to refer to those companies' goods and services.

---

### Antivirus and Antispyware

Scans all inbound and outbound POP3, SMTP and IMAP traffic  
ESETS\_SMTP module runs independent of the Mail Transport Agent (MTA)  
Filters out email-borne threats, including spyware at the gateway level  
Powered by the advanced ThreatSense® technology combining speed, accuracy and minimal system impact

---

### Antispam

Stops spam and phishing messages with high interception rates  
Features improved antispam engine with an option to define threshold levels with great precision

---

### Cross-platform protection

Eliminates malware targeting all platforms, including Windows, Mac and Linux operating systems  
Prevents malware from spreading from one platform to another

---

### Remote administration

Compatible with ESET Remote Administrator and supports management through a web interface  
Gives you the option to schedule on-demand scans, actions and security tasks  
Allows you to customize log details and modify reports and notifications to help you monitor compliance with company security standards

---

### Smooth operation

Features content filters for Postfix, Sendmail, Qmail, Exim, Zmailer and others  
Smoothly integrates in the Novell Groupwise environment  
Ready for integration with Zarafa collaborative software  
Built-in license manager automatically merges two or more licenses with the same customer name

---

### Distribution-independent solution

ESET provides installers for the most popular distributions  
Gives you the option to use the general installation package for less common systems not supported directly

---

